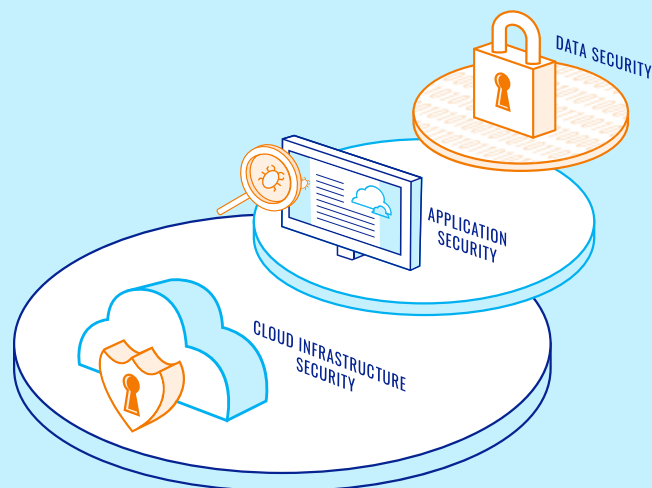


Thru. Data Security and Compliance

Thru provides a secure and scalable cloud service for manual file sharing and automated file transfer. We adhere to a multi-layer defense-in-depth model, which reduces the attack surface and contains security breaches at multiple levels. Security layers protect Thru's cloud infrastructure, application and customer data.



Cloud Infrastructure Security

Deployment

Thru is deployed in Microsoft Azure data centers which are compliant with the following standards (see also [Microsoft Azure documentation](#)):

- SSAE 18 / ISAE 3402 (previously SAS 70)
- SOC 3 SysTrust
- ISO 27001
- PCI Level 1 Service Provider Certified
- Tier III Standards Compliant

Antivirus Protection

- Real-time scanning of code and data areas
- Ongoing antivirus engine and signature updates
- Automatic quarantine of infected files

Monitoring

We monitor global infrastructure and security events with SIEM (security information and event management) software 24/7.

Network Protection

- High availability for all network components
- Multiple zones deployed for access controls and traffic logging
- Intrusion protection / detection software
- Dedicated VPN tunnels with multi-factor authentication for access into production systems by operations personnel
- Domain access control by Active Directory in each deployed geography
- Whitelisting and connection management of Thru's server endpoints protects against security scanning and denial of service attacks

Application Security

Authentication

- Required to access any part of Thru
- Strong credential policies for web portals and native applications
- Multi-factor authentication support
- Federated authentication with identity providers via SAML 2.0
- SFTP / FTPS endpoints are protected by password and key-based authentication

Web Portal Security

Protection against OWASP Top 10 web application security risks. Portals are scanned for security vulnerabilities on a regular basis.

Public API Protection

Protected by secure tokens.

Authorization

Role-based security to control access to application actions, workflows and data entities following the principle of least privilege.

Data Security

Data in Transit

Data transfer protected by secure transfer protocols: HTTPS / TLS 1.2 / 1.3, FTPS, SFTP.

Data at Rest

All data stored in Thru is encrypted by AES 256-bit encryption.

Payload Encryption

PGP encryption is supported along with key management in the administration portal.

Data Retention

Multi-level retention policies can keep files in place, archive them or purge them.

Security Scanning and Penetration Testing

- Weekly automated scanning of Thru's cloud infrastructure in all service geographies
- Weekly automated vulnerability assessments of Thru platform
- Periodic penetration testing by third-party security vendors

Secure Software Development Life Cycle

- Static application security testing is performed in all phases of Thru's SDLC with triage and remediation
- Dynamic application security testing is performed at the testing and release SDLC phases using automated cloud security tools

General Data Protection Regulation Compliance

Your administrators can

- Require user agreements before sending or receiving files
- Allow users to request removal of personal information from Thru

For more information about GDPR compliance, please see our [Privacy Policy](#).